

Nordstrom Contracting
Consulting Corp
36 Theills Mt Ivy Rd
Pomona, NY 10970

LETTER OF TRANSMITTAL

Project# 620-13-117
ADA Bathroom Renovations

To: Mark Cooperman
General Engineer
Montrose Campus
2094 Albany Post Rd
Montrose, NY 10548
914-737-4400 ex 2615

Submittal # _____

We are sending you Herewith Delivered by Hand Under Separate Cover Via **ELECTRONIC**

Plans Prints Shop Dwgs Samples Specifications Other _____

Copies	Item	# Pages	Description

The Above Listed Items are transmitted as indicated below:

Return By Date: SEE BAR CHART

Approval As Requested For Your Use For Construction

Approved As Noted Submit _____ Copies for Record Distribution

Returned for Correction, Revise & Resubmit Coordination (Should the attached be in conflict with your work, advise immediately)

For Your Files Other: _____

For Bids Due _____

Remarks: _____

CERAMAGUARD®/ CERAMAGUARD® FINE FISSURED™

Square Lay-in
medium texture



605, 607, 608



See more photos at:
armstrong.com/photogallery
SEARCH: ceramaguard

This is a non-directional ceiling panel for special application areas prone to moisture.

KEY SELECTION ATTRIBUTES

- Inorganic product. Resistant to the growth of mold and mildew
- Durable – Washable, Scrubbable, Soil-resistant
- Resistance to chemical fumes
- Non-directional visual reduces scrap and installation time
- Superior resistance to sagging in high humidity conditions including standing water and outdoor applications
- 30-Year Limited System Warranty against visible sag and mold and mildew

TYPICAL APPLICATIONS

- Laboratories
- Locker rooms/indoor pools
- Hydrotherapy/shower areas
- Food preparation areas (unperforated only)
- Exterior soffits/canopies
- Indoor parking garages
- Marine use (See note under "Application Considerations")

COLOR



White

DETAILS



1. Ceramaguard Square Lay-in
2. Ceramaguard with Prelude® Plus XL® 15/16" suspension system

CERAMAGUARD®/ CERAMAGUARD® FINE FISSURED™

Square Lay-in
medium texture

UP TO **37%** RECYCLED CONTENT

Calculate LEED contribution at armstrong.com/greengenie

LEED®

- energy management
- construction waste mgmt.
- regional materials
- design for flexibility
- EPD
- recyclable/extended producer resp.
- biobased materials
- recycled content
- sourcing of raw materials
- material ingredient reporting
- low emitting materials
- lighting quality
- acoustics

LOCATION DEPENDENT

VISUAL SELECTION

Edge Profile	Susp. Dwg. Pgs. 295-299 armstrong.com/catdwgs	Item No.	Dimensions (Inches)
--------------	--	----------	---------------------

CERAMAGUARD® – Unperforated

15/16" Square Lay-in	1	605	24 x 48 x 5/8" 
----------------------	---	------------	--

CERAMAGUARD® FINE FISSURED™ – Perforated

15/16" Square Lay-in	1	607	24 x 24 x 5/8" 
----------------------	---	------------	--

1	608	24 x 48 x 5/8" 
---	------------	--

PERFORMANCE SELECTION

Dots represent high level of performance.

\$\$\$

UL Classified Acoustics		Total Acoustics ¹	Fire Rating	Light Reflect	Anti-Mold & Mildew	Sag Resist	Certified Low VOC Emissions	Wash	Scrub	Soil	Recycled Content	Recycle Program	30-Yr Warranty
NRC +	CAC	=			Bio-Block	Humi-Guard+		Durability					
N/A	40	–	Fire Guard™	0.88	•	•	•	•	•	•	Std	–	•
0.55	38	–	Fire Guard	0.82	•	•	•	•	•	•	Std	–	•
0.55	40	–	Fire Guard	0.82	•	•	•	•	•	•	Std	–	•

¹ Total Acoustics™ ceiling panels have an ideal combination of noise reduction and sound-blocking performance in one product.
* Plain pattern (unperforated) is not appropriate where aesthetics or visual consistency is important.

SUSPENSION SYSTEMS

15/16"



Prelude®, Prelude® Plus XL® Aluminum, Prelude XL Fire Guard, Prelude® Plus XL® Fire Guard™, Prelude Plus XL Stainless Steel, Prelude XL for Exterior Applications

PHYSICAL DATA

Material

Wet-formed ceramic and mineral fiber composite

Surface Finish

Scrubable factory-applied plastic paint finish

Fire Performance

ASTM E84 and CAN/ULC S102 surface burning characteristics. Flame Spread Index 25 or less. Smoke Developed Index 50 or less. (UL labeled.) Fire Guard: A fire-resistive ceiling when used in applicable UL assemblies.

ASTM E1264 Classification

Type XX (high density ceramic-like composition with scrubable finish).
Pattern C E (items 607, 608);
Pattern G (item 605) Fire Class A

Humidity/Sag Resistance

HumiGuard® Max ceiling panels maintain maximum humidity and sag resistance, including outdoor applications.

Anti-Mold/Mildew

Ceramaguard panels inherently inhibit the growth of mold and mildew.

VOC Emissions

Third-party certified compliant with California Department of Public Health CDPH/EHLB/Standard Method Version 1.1, 2010. This standard is the guideline for low emissions in LEED, CalGreen Title 24, ANSI/ASHRAE/USGBC/IES Standard 189; ANSI/GBI Green Building Assessment Protocol.

Insulation Value

R Factor — 1.4 (BTU units)
R Factor — 0.25 (Watts units)

Application Considerations

For outdoor soffits and canopies, wind uplift should be considered. Ceramaguard is non-combustible per ASTM E136 and ISO 1182. See USCG Approval 164.109/52/0 for marine applications in all waters.

30-Year Performance Guarantee & Warranty

When installed with Armstrong® Suspension System. Details at armstrong.com/warranty

Weight; Square Feet/Carton

605, 608 – 1.52 lbs/SF; 48 SF/ctn
607 – 1.48 lbs/SF; 48 SF/ctn

Minimum Order Quantity

1 carton

Metric Items Available

605M, 607M, and 608M – Metric items are subject to extended lead times and minimum quantities. Contact your representative for more details.



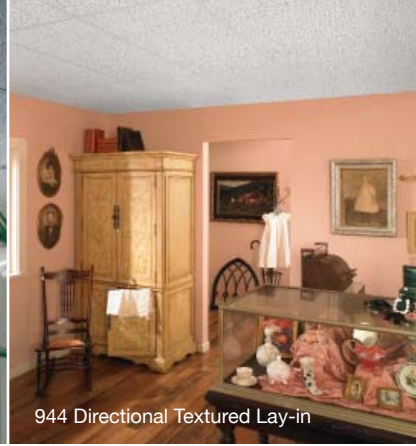
934 Random Textured



935 Random Textured



942 Fissured



944 Directional Textured Lay-in

Contractor Series™ Ceilings

The affordable Armstrong® Contractor Series™ ceiling panels offer the performance you need to add more value to your standard and custom projects with less effort. It's great for new, replacement and matching ceiling applications. Make an Armstrong Contractor Series ceiling part of your next project.

STYLES:



933 Random Textured



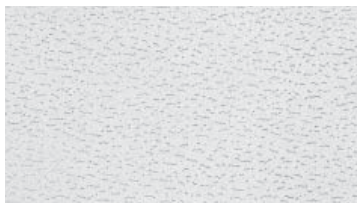
934 Random Textured



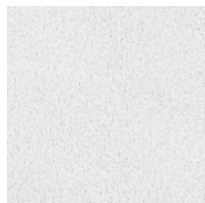
942 Textured



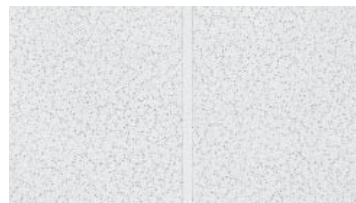
935 Random Textured



944 Directional Textured Lay-in



949 Textured










9767 Scored

FEATURES & BENEFITS

- Acoustical; reduces noise 55% (except 944)
- Easy installation system provides access to pipes, ducts and wiring
- Non-directional image reduces labor and scrap (933, 934, 935)
- Economical
- Great for new, replacement and matching ceilings
- Fire Performance Class A

PRODUCT SPECIFICATIONS

Item # / Commercial Item #	Edge Detail	Dimensions	Install System	Acoustics NRC/CAC	Sag Resistance	BioBlock®	Light Reflection	Fire Rating	Recycle Content	SF/Ctn	Pcs/Ctn	Material Type
933 / 769A	 Square	24 x 48 x 5/8"	15/16"	0.55/35	-	-	0.82	Class A	30%	80	10	Mineral Fiber
934 / 704	 Tegular	24 x 24 x 5/8"	15/16"	0.55/35	-	-	0.82	Class A	30%	64	16	Mineral Fiber
935 / 770	 Square	24 x 24 x 5/8"	15/16"	0.55/35	-	-	0.82	Class A	30%	64	16	Mineral Fiber
942 / 755	 Square	24 x 48 x 5/8"	15/16"	0.55/35	-	-	0.80	Class A	30%	80	10	Mineral Fiber
944*	 Square	24 x 48 x 9/16"	15/16"	0.55/35	-	-	0.80	Class A	30%	80	10	Mineral Fiber
949 / 756	 Square	24 x 24 x 5/8"	15/16"	0.55/33	-	-	0.81	Class A	30%	64	16	Mineral Fiber
9767 / 2767	 Tegular	24 x 48 x 3/4"	15/16"	0.55/35	-	-	0.82	Class A	29%	80	10	Mineral Fiber

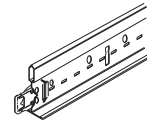
*Not available in all areas

Contractor Series™ ceiling panels come with a one-year limited manufacturer's warranty.

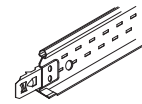
INSTALLATION SYSTEM—PRELUDE® 15/16" SUSPENSION SYSTEM*



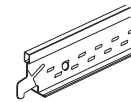
*Also available in black.



7301WH—12' Heavy Duty Main Beam - White
7300—12' Intermediate Duty Main Beam - White



XL7348RWH—4' Stab Cross Tee - White
XL7328RWH—2' Stab Cross Tee - White



ML7343WH—4' Hook Cross Tee - White
ML7323WH—2' Hook Cross Tee - White

Visit www.armstrong.com for a ceiling materials estimator, installation instructions, videos, and more.

NOTE: Noise reduction coefficient (NRC), ceiling attenuation class (CAC), light reflectance (LR) and flame spread ratings are expressed according to ASTM E 1264 requirements.

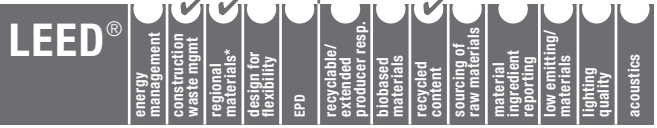
ContractorSeries™
 CEILINGS

Armstrong®



63% RECYCLED CONTENT

Calculate LEED contribution at armstrong.com/greengenie



PRELUDE® XL® and PRELUDE XL HIGH RECYCLED CONTENT (HRC)

15/16" Exposed Tee System



KEY SELECTION ATTRIBUTES

- **Seismic Rx®** Suspension System saves time and money; Armstrong offers an ICC-ES approach to installations (ESR-1308)
- **PeakForm®** profile increases strength and stability for improved performance during installation
- **SuperLock™** main beam clip is engineered for a strong, secure connection and fast accurate alignment confirmed with an audible click; easy to remove/relocate
- Hot dipped galvanized coating inhibits red rusting better than electrogalvanized or painted systems
- 10-Year Limited System Warranty; 30-Year Limited Ceiling Systems Warranty when used with **HumiGuard® Plus** products
- **FastSize™** main beams and cross tees can be ordered with special sizing and route spacing for your project needs in one carton minimums with two week lead times
- Rotary-stitched during manufacture for additional torsional strength and extra stability during installation
- XL² staked-on end detail provides secure locked connection; easy to remove, reuse, and relocate
- Fire Guard™ options offer UL design fire-rated performance
- Some items available in metric sizes

TYPICAL APPLICATIONS

- Retail
 - Education
 - Healthcare
 - Offices
 - Hospitality
- Blizzard White powder-coated finish coordinates with Optima®, Ultima®, Calla™, and Lyra™ ceiling panels for a clean, seamless, monolithic installed visual.
- Linear lighting integration is easy with made-to-order main beam-to-cross tee adapters, route spacing, miter spacing, and short cross tees (3" to 6" lengths).

VISUAL SELECTION

PERFORMANCE

Item No.♦	Face Profile	Description	Route Spacing	Dimensions (Inches)	Load Test Data (Lbs./Lin. Ft.)		Fire Guard™ 	Seismic Category 	Packaging	
					L/360	L/240			Pcs./ Ctn.	Lin. Ft./ Ctn.
Prelude XL (Red Numbers are Fire Guard Items)							4 Ft.	5 Ft.	Dots represent high level of performance.	
<input type="checkbox"/> 7301_♦	15/16"	12' HD Main Beam	6" O.C.	144 x 15/16 x 1-11/16"	16.73	8.73	-	•	20	240
<input type="checkbox"/> 7301HRC							-	•	20	240
<input type="checkbox"/> 8301							•	•	20	240
<input type="checkbox"/> 7300_♦	15/16"	12' ID Main Beam	6" O.C.	144 x 15/16 x 1-11/16"	13.5	6.35	-	-	20	240
<input type="checkbox"/> 8300_♦							•	-	20	240
<input type="checkbox"/> 7305_♦	15/16"	140" ID Main Beam	10" O.C.	140 x 15/16 x 1-11/16"	10.73	8.73	-	-	20	233
<input type="checkbox"/> 7306_♦	15/16"	132" HD Main Beam	10", 30", 50", 56", 76", 96", 116", 122"	132 x 15/16 x 1-11/16"	16.73	8.73	-	•	20	220
<input type="checkbox"/> 7307_♦	15/16"	126" HD Main Beam	10", 30", 50", 70", 90", 110", 116"	126 x 15/16 x 1-11/16"	-	-	-	•	20	210
<input type="checkbox"/> 7302_♦	15/16"	10' ID Main Beam	6" O.C.	120 x 15/16 x 1-11/16"	13.5	6.35	-	-	20	200
<input type="checkbox"/> XL7380_♦	15/16"	8' Cross Tee	12" O.C.	96 x 15/16 x 1-11/16"	12.12**	-	-	•	20	160
<input type="checkbox"/> XL7390_♦	15/16"	6' Cross Tee	12" O.C.	72 x 15/16 x 1-11/16"	12.24*	-	-	•	20	120
<input type="checkbox"/> XL7357_♦	15/16"	5' Cross Tee	6", 12", 24", 30"	60 x 15/16 x 1-11/16"	-	7.61	-	•	60	300
<input type="checkbox"/> XL7358_♦	15/16"	5' Cross Tee	20" O.C.	60 x 15/16 x 1-11/16"	-	7.61	-	•	60	300
<input type="checkbox"/> XL7341_♦	15/16"	4' Cross Tee	12" O.C.	48 x 15/16 x 1-11/16"	16.89	-	-	•	60	240
<input type="checkbox"/> XL7341HRC							-	•	60	240
<input type="checkbox"/> XL8341							•	•	60	240
<input type="checkbox"/> XL7340_♦	15/16"	4' Cross Tee	12" O.C.	48 x 15/16 x 1-11/16"	12.25	-	-	•	60	240
<input type="checkbox"/> XL8340_♦							•	•	60	240
<input type="checkbox"/> XL7342_♦	15/16"	4' Cross Tee	12" O.C.	48 x 15/16 x 1-1/2"	7.8	-	-	•	60	240
<input type="checkbox"/> XL7348_♦	15/16"	4' Cross Tee	12"	48 x 15/16 x 1-3/8"	6.78	-	-	•	60	240
<input type="checkbox"/> XL7330_♦	15/16"	3' Cross Tee	-	36 x 15/16 x 1-11/16"	20.3 @ 3'	-	-	•	60	180
<input type="checkbox"/> XL7378_♦	15/16"	30" Cross Tee	-	30 x 15/16 x 1-3/8"	16.54 @ 2.5'	-	-	•	60	150
<input type="checkbox"/> XL7328_♦	15/16"	2' Cross Tee	-	24 x 15/16 x 1-3/8"	36.0 @ 2'	-	-	•	60	120
<input type="checkbox"/> XL8323_♦							•	•	60	120
<input type="checkbox"/> XL8320HRC	15/16"	2' Cross Tee	-	24 x 15/16 x 1-11/16"	61.33 @ 2'	-	-	•	60	120
<input type="checkbox"/> XL8320							•	•	60	120
<input type="checkbox"/> XL7368_♦	15/16"	20" Cross Tee	-	20 x 15/16 x 1-3/8"	36.0 @ 1.67'	-	-	•	60	100
<input type="checkbox"/> XL7398_♦	15/16"	18" Cross Tee	-	18 x 15/16 x 1-3/8"	-	-	-	•	60	90
<input type="checkbox"/> XL7318_♦	15/16"	1' Cross Tee	-	12 x 15/16 x 1-3/8"	36.0 @ 1'	-	-	•	120	120
<input type="checkbox"/> XL7304_♦	15/16"	4" Cross Tee	-	4 x 15/16 x 1-3/8"	-	-	-	•	60	20
<input type="checkbox"/> FastSize™	15/16"	Main beams L: 36" - 144" / Cross tees L: 6" - 144" / Route spacing 3" from ends, 6" thereafter							Varies	Varies

* Simple Span
 ** Hanger Wire Support Mid-Span
 ♦ Items available in Standard, Premium, and Blizzard White powder-coated finish
 ♦ Items available in White and Blizzard White powder-coated finish
 When specifying or ordering items with a color or finish, add the two-letter suffix to the end of the item number (e.g., 7301HA – Haze)

ASTM Class
 HD - Heavy-duty
 ID - Intermediate-duty
 LD - Light-duty

NOTE: Additional Prelude XL items for TechZone™ Ceiling Systems are listed in the TechZone Technical Guide (BPCS-4486). Available online at armstrong.com/techzone



PRELUDE® XL® and PRELUDE XL HIGH RECYCLED CONTENT (HRC)

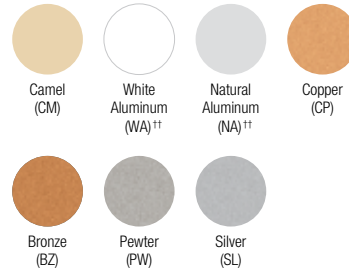
15/16" Exposed Tee System

COLOR AND FINISH SELECTION

Standard



Premium



Powder-coated Finish*

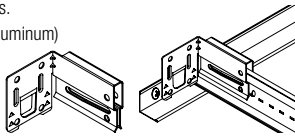


†† Capping only
 ††† Peel-off protective film on exposed surfaces to protect from scuffing or marking during installation
 NOTE: Items 8300, XL8340, XL8323 available in Black (BL) or White (WH) only.
 ♦ Items available in powder-coated finish
 When specifying or ordering items with a color or finish, add the two-letter suffix to the end of the item number (e.g., 7301HA – Haze)

ACCESSORIES

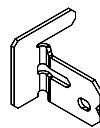
BERC2 – 2" Beam End Retaining Clip – Allows you to create a code compliant Seismic D, E, F ceiling installation while eliminating the need to use 2" wall molding or spreader bars.

ALBERC2 (aluminum)



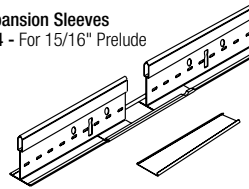
- BERC2 (Steel) – 200 pcs
- FZBERC2 (Steel) – 50 pcs
- ALBERC2 (Aluminum) – 200 pcs
- FZALBERC2 (Aluminum) – 50 pcs

STAC – Single Tee Adapter Clip – Used to create code compliant non-seismic and seismic C and D, E, F off-module main beam to cross tee connections.



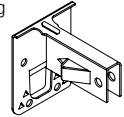
- STAC – 120 pcs
- FZSTAC – 50 pcs

Expansion Sleeves
ES4 - For 15/16" Prelude



- ES4 – 200 pcs
- FZES4 – 50 pcs

GCWA – Grip Clip Wall Attachment – Joins main beam or cross tee to wall molding via locking bars without pop rivets or screws.

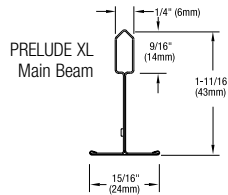


- GCWA – 250 pcs
- FZGCWA – 50 pcs

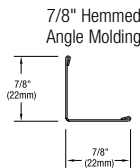
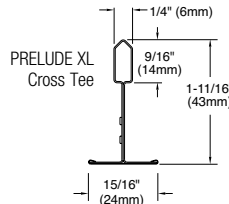
DETAILS



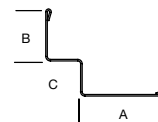
PRELUDE XL Main Beam



PRELUDE XL Cross Tee



Shadow Molding



SEISMIC PERFORMANCE

Main Beams

7301, 7301HRC, 7306, 7307, 8301

Minimum Lbs. To Pull Out Compression/Tension

335.0
 330.0

Cross Tees

All XL cross tees exceed 300 lbs. in both compression and tension.

ICC Reports

For areas under ICC jurisdiction, see ICC evaluation report number ESR-1308 for allowable values and/or conditions of use concerning the suspension system components listed on this page. The report is subject to reexamination, revisions, and possible cancellation.

PHYSICAL DATA

Material

Hot dipped galvanized steel

Surface Finish

Baked polyester paint or powder coated

Face Dimension

15/16"

Profile

Exposed tee

Cross Tee/Main Beam Interface

Override

End Detail

Main Beam: Staked-on clip

Cross Tee: Staked-on clip

Duty Classification

Intermediate or Heavy-duty